



Robert Lisle

Lot 17

Approximately 4444 heated square feet

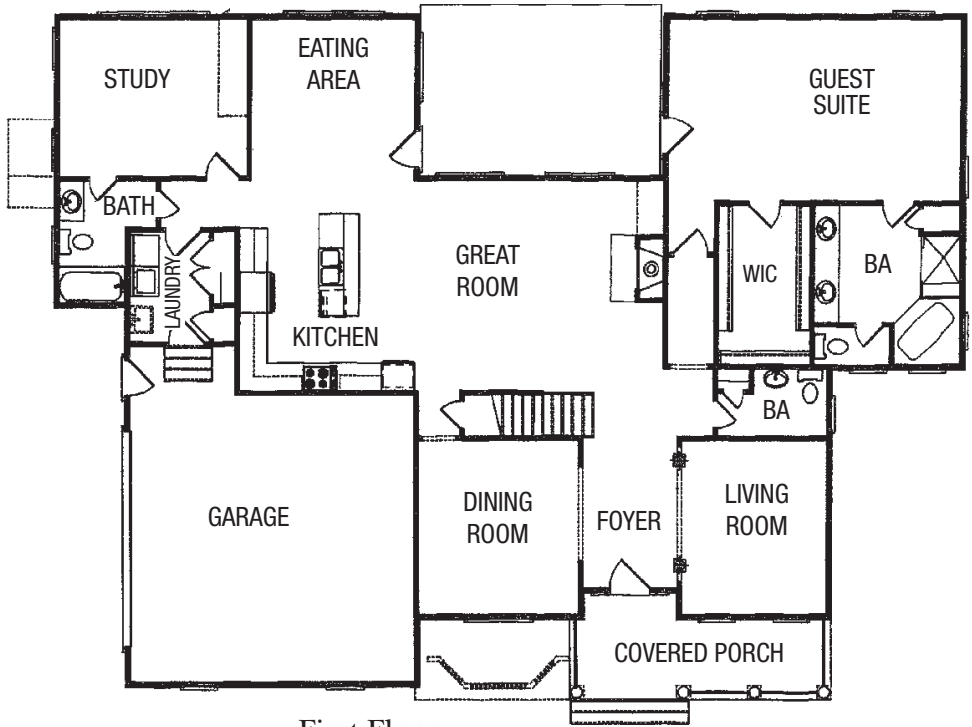
6.5 baths

6.027 acres

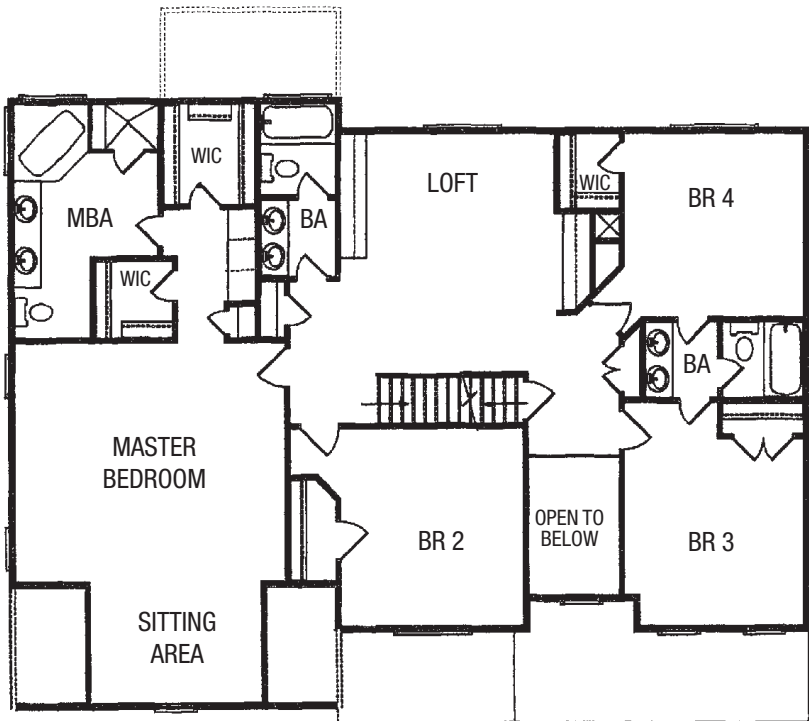
STROWD MOUNTAIN

Construction and completion of the above referenced house shall be in accordance with seller's 'COPYRIGHT' plans and specifications. Seller reserved the right to substitute material, equipment and appliances of equivalent quality and make changes in the plans and specifications, including dimensional, mechanical and structural changes, provided that such changes shall not significantly adversely affect the quality and value of the house. NOTE: COMPLETED CONSTRUCTION (AS BUILT SPECIFICATIONS) TAKES PRECEDENCE OVER THESE WRITTEN SPECIFICATIONS. INFORMATION HEREIN IS DEEMED RELIABLE BUT IS NOT GUARANTEED.

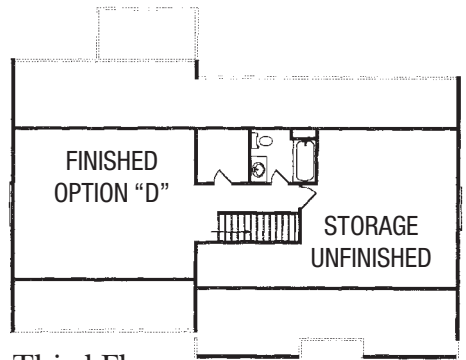
STROWD MOUNTAIN



First Floor



Second Floor



Third Floor